

FormsPartner® Enterprise

An integral part of any business is the printing of time- or information-sensitive documents, such as medical records, prescriptions, manufacturing and logistics control documents, identification cards and licenses, checks and other negotiable items. So why is it still a manual process for most companies-- and one of the most time consuming and expense activities to businesses?

Close the loop with FormsPartner Enterprise

FormsPartner Enterprise is an easy-to-use software application for managing and printing documents. In real-time, FormsPartner Enterprise accepts data from a wide range of sources, merges it with the appropriate form, then outputs the completed document to printers and other devices throughout your organization. And when used with Source Technologies' secure MICR printers, FormsPartner Enterprise protects against information pilfering and fraud while printing documents of a sensitive nature.



Drop the data file to a defined incoming directory on the server or machine. The FPE system picks up the data file from the directory to import to the FPE system and prints to the defined printer.

FormsPartner Enterprise Highlights

- Quick, cost-effective implementation since no modification is required to the source application's print data stream
- Accepts data from a wide range of sources and outputs to a variety of output devices
- Powerful conditional processing and print control for added intelligence and security

Implementation is Easy

Because no programming changes are required to your existing application's print data stream, FormsPartner Enterprise can be quickly and easily implemented with minimal impact on IT department resources. It can be deployed to a centralized server or PC, making it scalable to fit any size enterprise or application. Its seamless integration into your IT environment will enable you to quickly realize the benefits of secure document print-management.

Security and Control

With features such as Encryption/Decryption and Bi-Directional Print Confirmation, FormsPartner Enterprise and Source Technologies' Secure printers work together to create a print environment that is powerful, end-to-end, and secure. This is ideal for healthcare, manufacturing, retail, government, and other industries that require confirmed printing of time-and information-sensitive documents.

At Work in Healthcare

Coupled with our proven expertise in secure document print applications, FormsPartner Enterprise is allowing hospitals and other healthcare providers to secure and automate real-time printing of doctors' orders, medical records, lab results, and other documents. These documents include the form layout, logos, authorized signatures, and all variable data. And FormsPartner Enterprise quickly and easily integrates into an institution's existing document management or workflow system.

State and Local Government

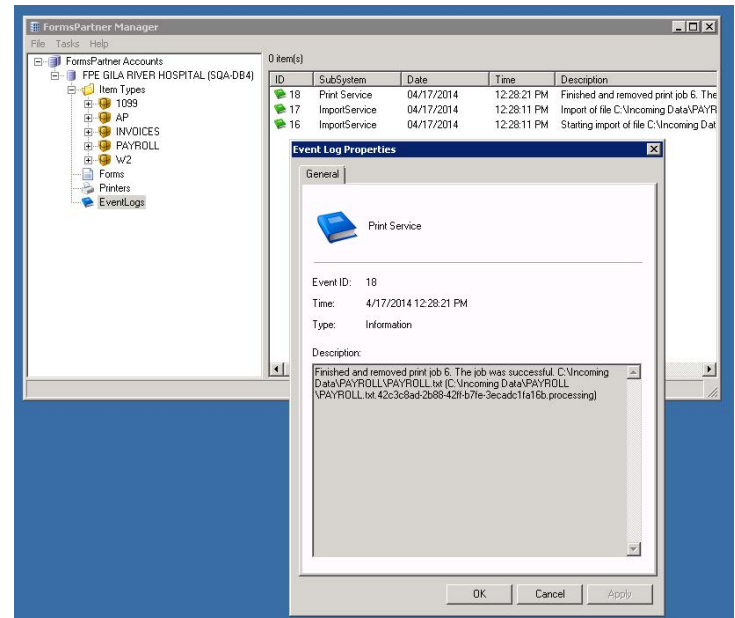
FormsPartner Enterprise is benefiting state and local governments, including school districts, where it is used to design, store and print contracts, purchase orders, report cards, payroll, A/P checks, and other forms.

Retail and Distribution

FormsPartner Enterprise is helping large retailers turn ordinary shipping documents into value-added marketing tools containing appropriate store logo, ship-to label, customer return label with instructions, warehouse pick ticket tag, gift tag, and promotional messages. And to help improve efficiency, FormsPartner Enterprise balances print volume by dynamically routing the output across multiple printers.

Enterprise Resource Planning

Within an Enterprise Resource Planning (ERP) environment, FormsPartner Enterprise acts as powerful middleware, accepting and merging ERP data with appropriate templates, and routing the completed form to a host of output devices, all in real-time. FormsPartner Enterprise easily integrates into most common ERP environments.



Sample FPE Print Event Log

System Requirements/Specifications

Web Server

Windows 2008, Windows 2012, Windows 2016 server with current Service Packs * 32 and 64 Bit Operating Systems

Windows 7, Windows 8, Windows 10 machine with current Service Packs * 32 and 64 Bit Operating Systems

SQL Express 2005, SQL Express 2008, SQL Express 2012, SQL Express 2014, SQL Express 2016

SQL Server 2005, SQL Server 2008, SQL Server 2012, SQL Server 2014, SQL Server 2016 * 32 and 64 Bit SQL Versions

.Net Framework v4.0 with current Service Packs

Machine should be configured to the recommended resources of Windows and .NET

* The database is not required to reside on the application server.