



Universal Printer Driver Installation Guide

Copyright

Copyright ©2018 by Source Technologies. All rights reserved.

No part of this document may be reproduced or utilized in any form or by any means, electronic or mechanical, including photocopying, recording, or by any information storage and retrieval system, without permission in writing from Source Technologies.

Published in the United States of America by:

Source Technologies
4205B Westinghouse Commons Drive
Charlotte, NC 28273

Author: Source Technologies

Notice

This manual serves as a reference for a Source Technologies Secure MICR Printer. This manual should be used as a reference for installing a PCL5 Universal Printer Driver for the full line of Source Technologies Secure MICR printers. Additionally, the manual addresses the use of Separator Pages as one method to enable MICR printing, and a .PCM file to allow the printer driver to recognize and link printer resident MICR and Secure fonts to WYSIWYG applications.

For more information on MICR printing and other methods of programming the Source Technologies Secure Printers, visit our website at WWW.SOURCETECH.COM and download the appropriate Secure MICR Printer Programmers Guide.

To the best of our knowledge, the information in this publication is accurate: however, neither Source Technologies nor its dealers or affiliates assume any responsibility or liability for the accuracy or completeness of, or consequences arising from, such information. Changes, typos, and technical inaccuracies will be corrected in subsequent publications. This publication is subject to change without notice. The information and descriptions contained in this manual cannot be copied, disseminated, or distributed without the express written consent of Source Technologies. This document is intended for informational purposes only. Mention of trade names or commercial products does not constitute endorsement or recommendation for use by Source Technologies. Final determination of the suitability of any information or product for use contemplated by any user, and the manner of that use is the sole responsibility of the user. We recommend that anyone intending to rely on any recommendation of materials or procedures mentioned in this publication should satisfy himself as to such suitability, and that he can meet all applicable safety and health standards.

All trade names or products used in this manual are for identification purposes only and may be trademarks or registered trademarks of their respective companies.

Document Number: SP1003IG

Revision: C

1. Printer and Driver Installation

Note: To access Source Technologies' secure fonts loaded on the printer, such as the E13B MICR font, install the universal driver as described in the next section. After installation there are a few additional steps that may need to be performed to access the printer's MICR and Secure fonts from within Windows applications.

For complete information on how to unpack and setup your printer, see your printer's user's guide located on a CD labeled with the printer type, ex. ST97xx.

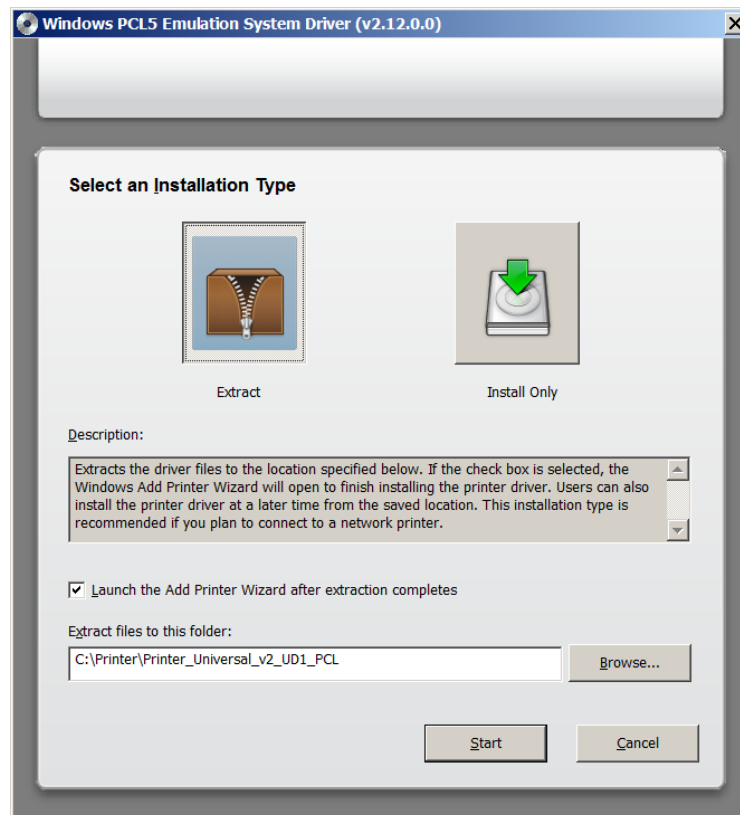
1. Locate the Universal Printer Driver CD that was shipped with your printer and load it into your computers CD ROM drive. You can also find the latest print driver on our website at www.sourcetech.com/support/printer-drivers.

Select the file: Printer_Universal_v2_UD1_PCL5_Emul_mmddyyyy.exe

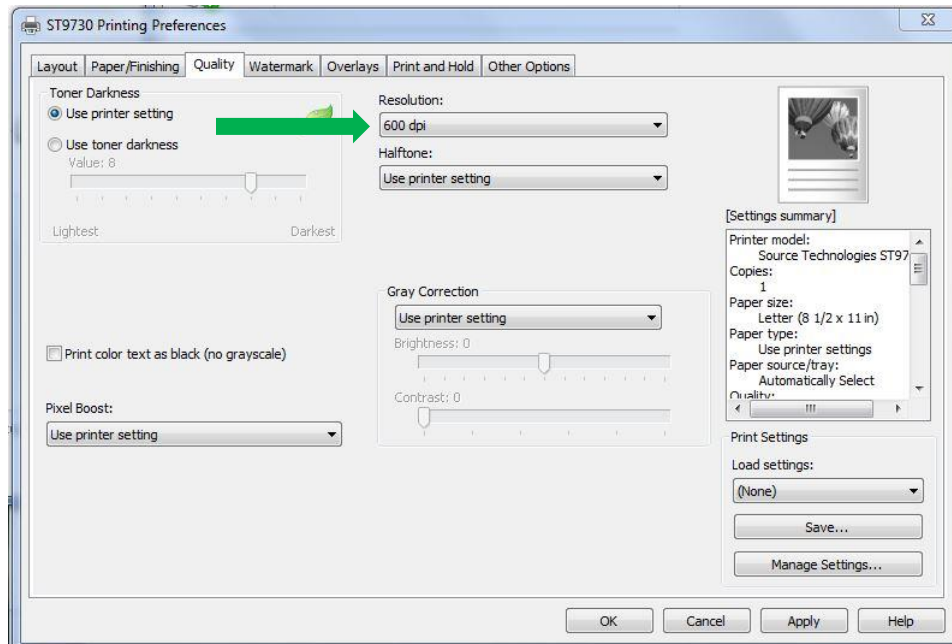
2. Read and Accept License agreement.

Note: Do not connect the printer via USB at this time.

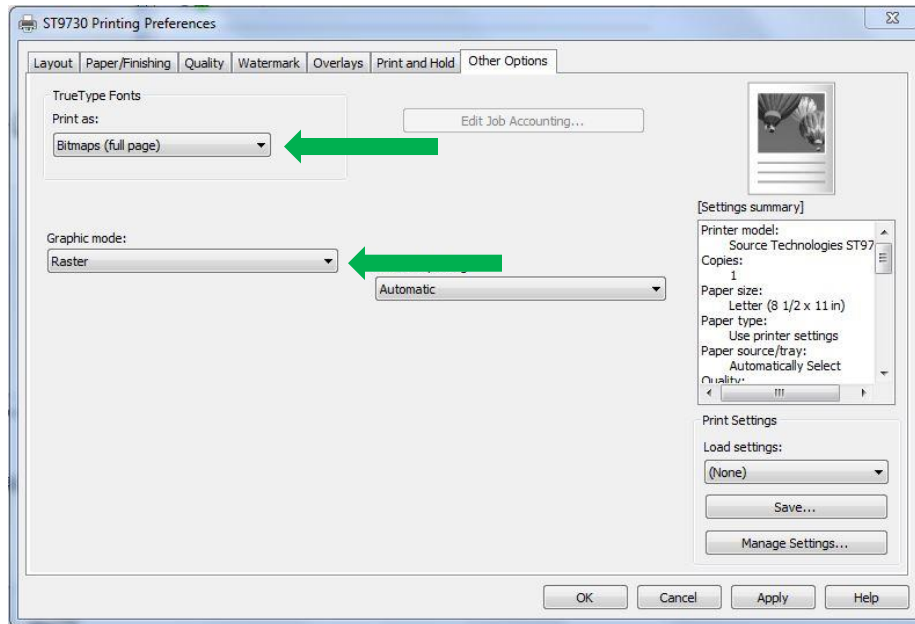
3. When the following screen appears, select the option that best matches your printer connectivity.
 - a. Select Extract and check "Launch the Add Print Wizard..." if your printer is connected via a network or parallel cable.
 - b. Select Install Only if the printer will be connected via USB.



4. Write down or remember the link that appears on Printer Wizard Information screen and press START. i.e. C:\PRINTER\PRINTER_UNIVERSAL_V2_UD1_PCL
5. Once the files are extracted or Install Only has run, connect the printer's data cable and power the printer on. For USB installs, Windows should complete the addition of the printer to your system and configure it to the proper USB port.
6. For all other installs the Add Printer Wizard should start automatically for you to complete the installation of your printer. Follow the onscreen prompts to:
 - Add a Local or Network, Wireless, or Bluetooth printer
 - Select the proper port used to communicate with the printer from the system.
 - Select Source Technologies as the Manufacturer and Source Technologies Universal v2 as the printer. If Source Technologies is not listed, click **Have Disk** and browse to the location noted in step 4 looking for the GNUD1o40.INF file found in the GDI folder.
 - Choose a name for your printer or click NEXT to accept the default value.
 - Select if you would like to share the printer or not.
 - Select if you would like this to be your default printer
 - Print a windows test page
 - Click Finish to complete your installation.
7. Once the print driver is loaded the following driver settings are recommended under the Printing Preferences.
 - a. On the **Quality** tab the resolution should be set to 600 dpi as seen below.



- b. On the **Other Options** tab set TrueType Fonts to Print as Bitmaps (full page) and Graphic Mode to Raster as seen below as well.



8. If you have any issues with the loading of your printer driver, please contact your distributor or Source Technologies Tech Support for assistance at 800-922-8501 option 2.

2. Configure the driver to recognize the printers internal MICR and Security Fonts in Windows WYSIWYG applications.



NOTE: If you will be using your Source Technologies Secure MICR printer with an application which requires you to access the internal printer fonts from a dropdown menu, you will need to perform the following steps to add our MICR and Security font library to your newly installed driver. These steps are not required if you will be programming the Source Technologies MICR commands from the programmer's manual directly into your application.

Before proceeding, copy the file **ST_FONTS.PCM** from the folder **D:\Config Files** folder on the driver CD to your local machine in a location where it will not be deleted. Your actual drive letter may vary. If you downloaded the driver from our website you will find this folder in the same location as the driver installation file. We recommend all other applications be closed at this time.

1. Open the printer folder (for example, **Start >Devices and Printers**).
2. *Right-click* on the printer name that was just installed then select **Printer Properties**.
3. *Select* the **Fonts** tab.
4. *Select* **Add**.
5. *Select* **Browse** next to Font Source Path then locate where you placed the ST_FONT.PCM file.
6. *Select* **Browse** beside the Target Path and select **My Documents**.
7. *Select* the **Search the Path** button.
8. *Select* the check box beside **ST Font Collection**.
9. *Select* the check box beside each font to be used.
10. *Select* **OK** to finish setup.
11. Proceed to the section titled Configure the Printer to Enable MICR Mode. The fonts will not print properly until this step is complete.

Note: *The steps above may vary depending on the operating system being used.*

Note: The following fonts and point sizes are supported. From an application, highlight the font, select the font type then point size.

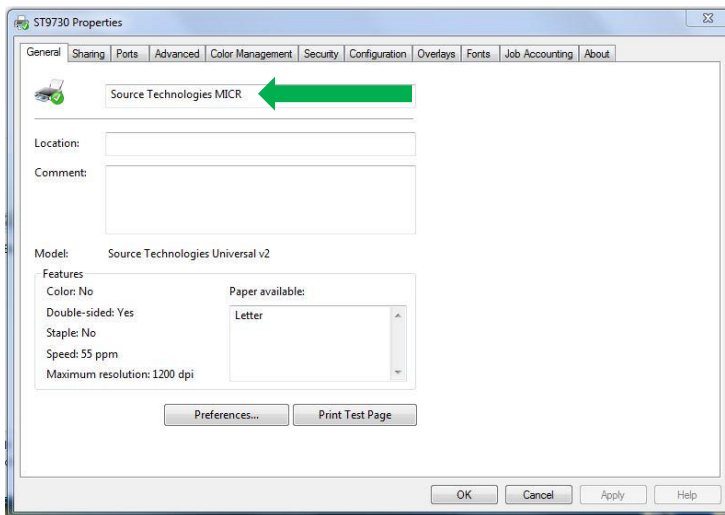
Font Name	Point Size	Font Sample
MICR E13B	8	MICR E13B 8 pt. 0 1 2 3 4 5 6 7 8 9 *
MICR CMC7	8	MICR CMC7 8 pt. 0 1 2 3 4 5 6 7 8 9 *
SECURE	36	SECURE 36 pt. 
ICR Secure	12	ICR Secure 12 pt. 0 1 2 3 4 5 6 7 8 9 *
MicroPrint	1	MicroPrint 1pt. 

Note: The fonts illustrated above may not match the size or appearance of those printed by the MICR printer. The characters are enhanced for illustration purposes only.

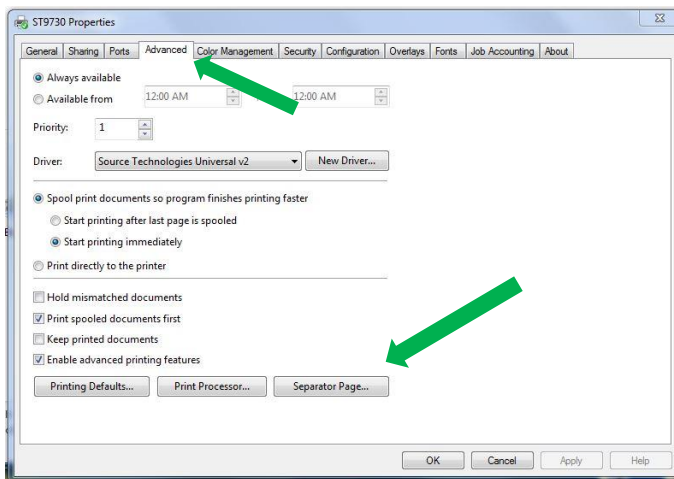
3. Configure the Driver to enable MICR Mode

To unlock the secure font resources located in the printer, the driver must be configured to send down a separator page before each print job. The separator page contains the necessary commands to unlock the resources.

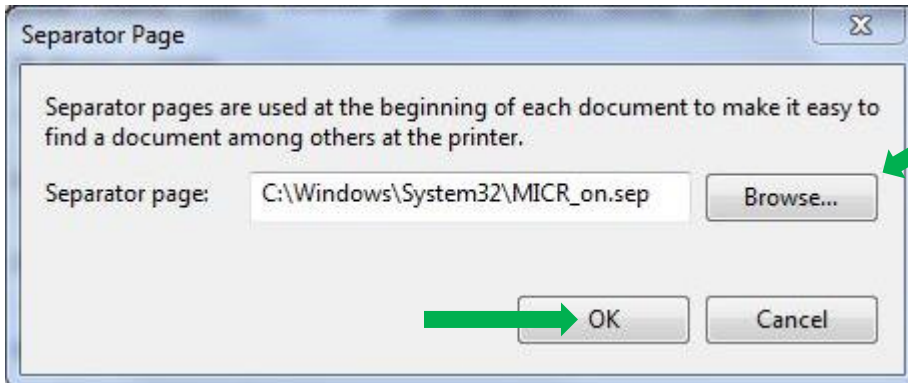
1. Before proceeding, copy the files **MICR_on.sep** and **MICR_off.sep** from the **Config Files** folder on the driver CD or extracted PC location to **C:\WINDOWS\SYSTEM32** of the local machine.
2. *Select **Start** then select the **Devices and Printers** folder.*
3. Locate the printer you just installed and *right-click* the icon. Then *select **Printer Properties***.
4. From the General tab, *type* a descriptive name for the printer, such as **ST9720 MICR**.



5. *Select the **Advanced** tab and then click the **Separator Page** button.*



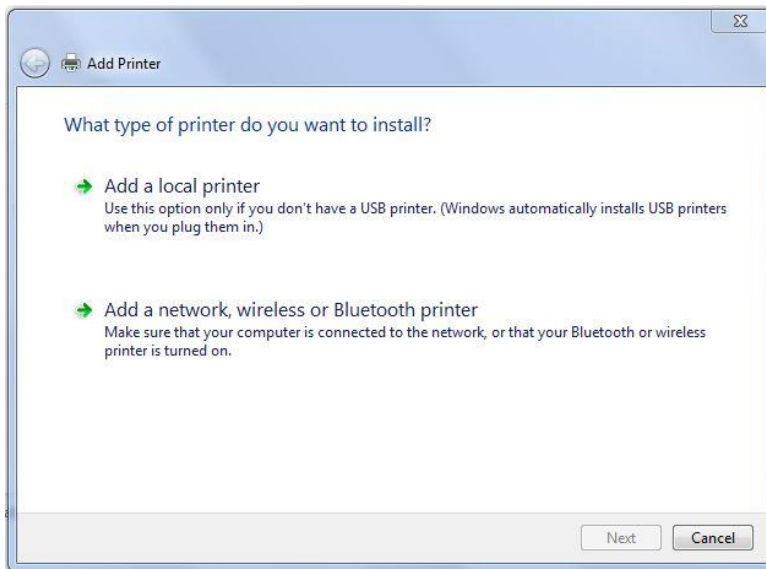
6. Select **Browse** and locate the **MICR_on.sep** file in the **Windows\system32** folder. Select the file and click OK. Click OK again to complete the setting.



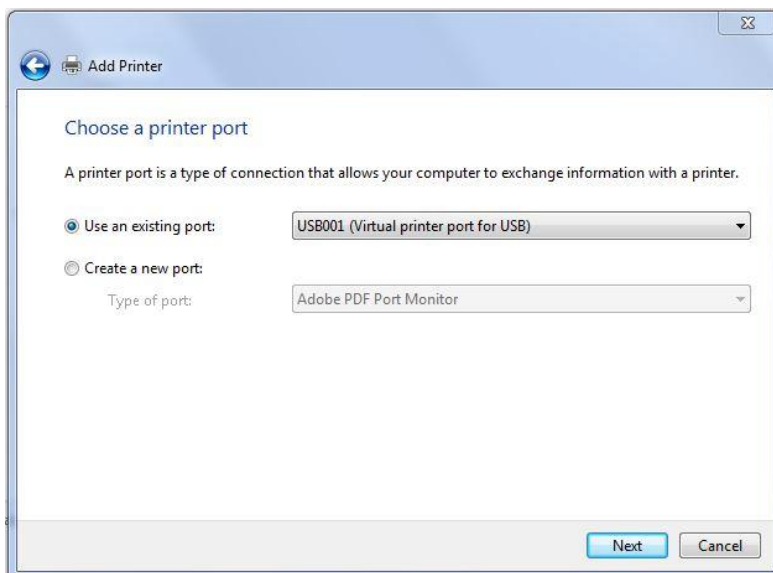
4. Configure Another Driver to Print Non-MICR Jobs

If you plan to use your printer for normal office printing (without MICR toner or fonts) a second instance of the printer driver must be added. Switching between MICR and non-MICR modes alters settings which are stored in the printer's NVRAM. It is recommended not to switch between these modes more than a few times per day to prolong the life of System Board NVRAM components.

1. In Devices and Printers, *select Add a Printer.*
2. *Select the Add a local printer option and then select Next.*

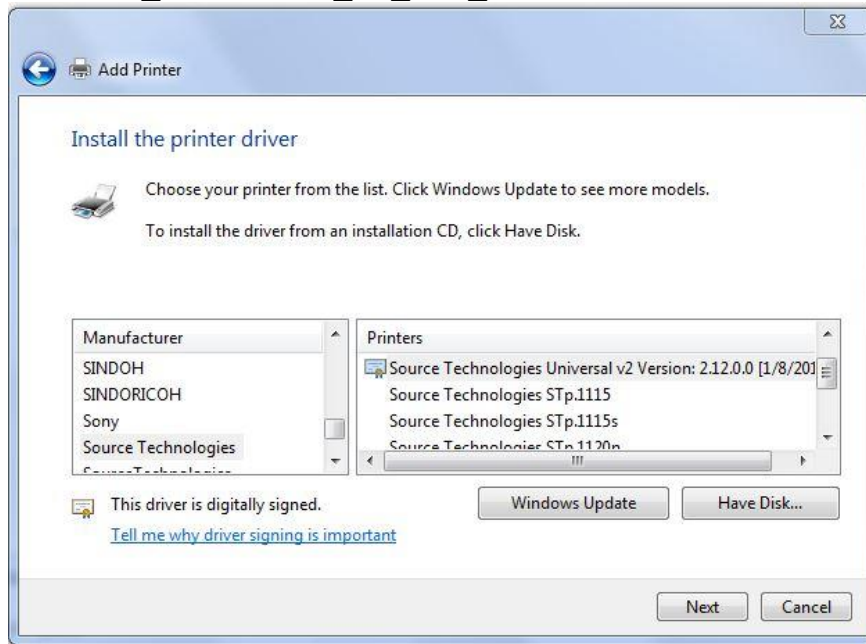


3. *Choose the port to which your MICR printer is connected and then select Next.*

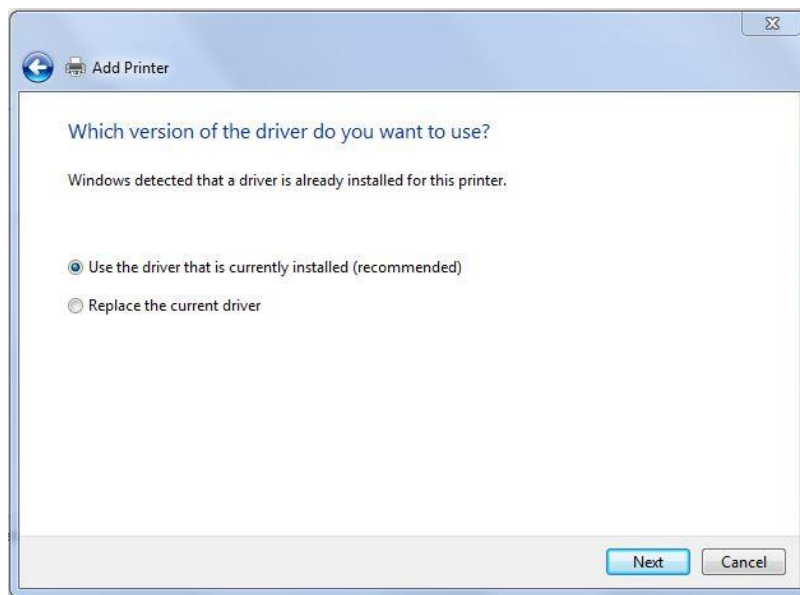


4. Select the **Have Disk** button and then **Browse** to the location of the driver files at the following full path:

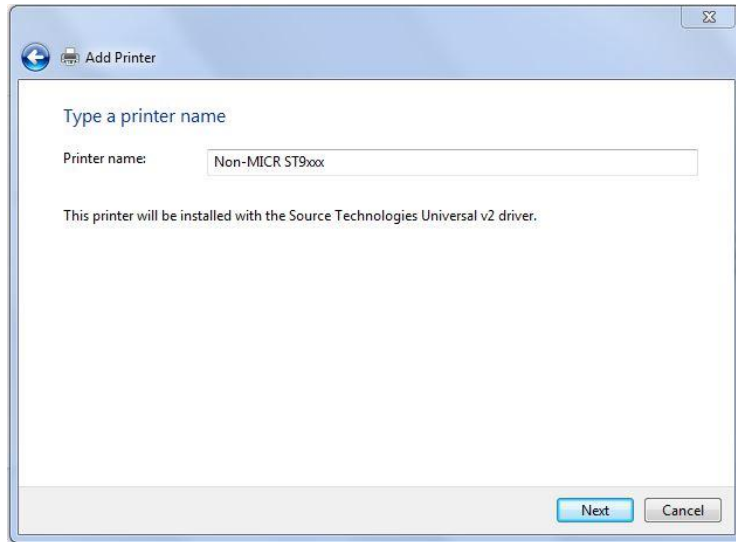
C:\PRINTER\PRINTER_UNIVERSAL_V2_UD1_PCL\DRIVERS\PRINT\GDI\



5. Select **Source Technologies** as the Manufacturer and **Source Technologies Universal v2** for the printer and select **Next**.
6. Select **Keep existing driver** and select **Next**.

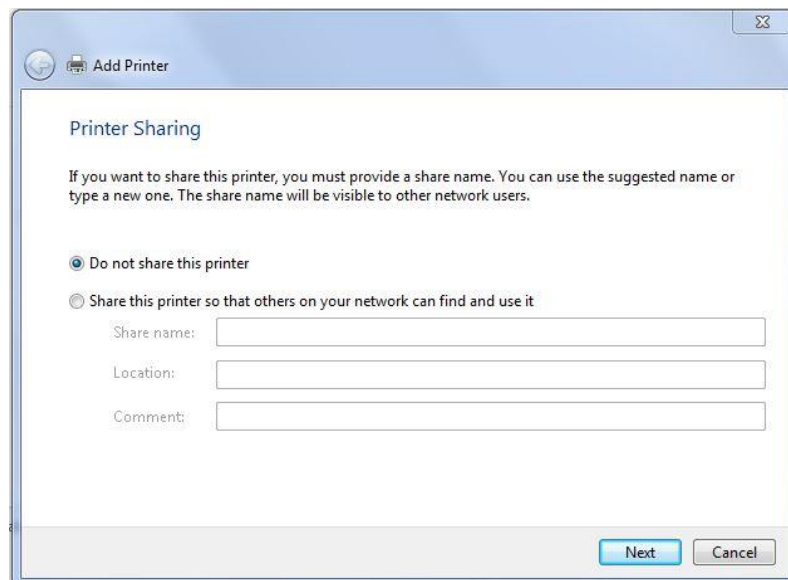


7. Enter a printer name to differentiate it from the MICR instance of the driver. Select **Next**.



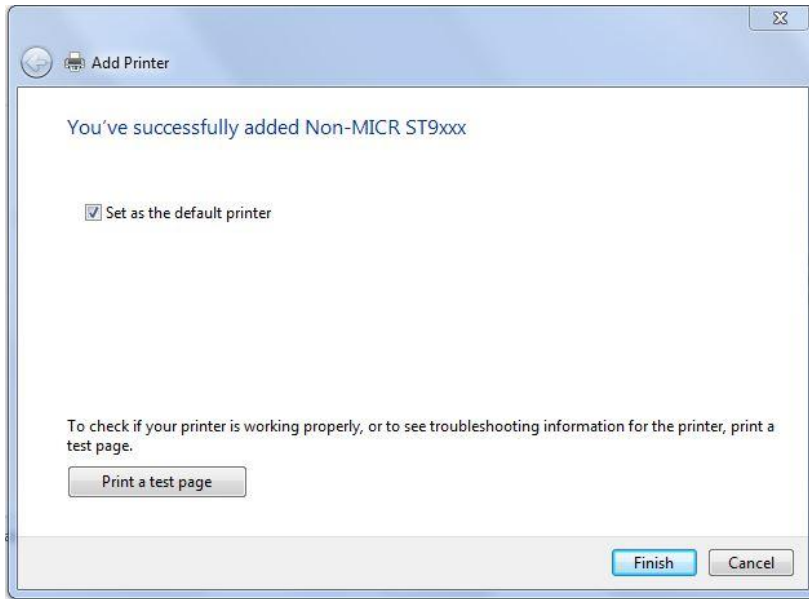
The screenshot shows the 'Add Printer' dialog box. The title bar contains a back arrow, a printer icon, and the text 'Add Printer'. The main content area has the heading 'Type a printer name'. Below this is a text input field labeled 'Printer name:' containing the text 'Non-MICR ST9xxx'. Underneath the input field is the text 'This printer will be installed with the Source Technologies Universal v2 driver.' At the bottom right of the dialog are two buttons: 'Next' and 'Cancel'.

8. If the printer will not be shared on a network, leave the "Do Not Share This Printer" button selected and select **Next**. Otherwise, select the "Share As" radio button and enter the name you wish to assign to this shared printer. The location of this printer and/or any associated comments connected with the printer may be entered at this time then select **Next**.



The screenshot shows the 'Add Printer' dialog box at the 'Printer Sharing' step. The title bar contains a back arrow, a printer icon, and the text 'Add Printer'. The main content area has the heading 'Printer Sharing'. Below this is the text: 'If you want to share this printer, you must provide a share name. You can use the suggested name or type a new one. The share name will be visible to other network users.' There are two radio buttons: 'Do not share this printer' (which is selected) and 'Share this printer so that others on your network can find and use it'. Below the radio buttons are three text input fields: 'Share name:', 'Location:', and 'Comment:'. At the bottom right of the dialog are two buttons: 'Next' and 'Cancel'.

9. Finally decide if the printer is to be **Set at the default printer** and if you would like to print a test page to test the configuration of the printer.



10. *Select* **Finish** to complete the installation.
11. Follow the instructions in section 2.2 to add the **MICR_off.sep** file to the newly installed driver. The fonts added in section 2.1 do not need to be added to the NON-MICR driver.
12. When all of the desired changes have been made, *select* **OK** to save the settings.

5. Printing Secure Font Resources from a Windows Application

First, set the MICR printer as the active printer – in most applications this is done by selecting Print from the File menu.

Note: This is not necessary if the MICR printer is the default printer.



Source Technologies' fonts should appear in the application's font formatting options. The fonts are named:

- ICR Secure 12 pt.
- MICR CMC7 8 pt.
- MicroPrint 1 pt.
- MICR E13B 8 pt.
- SECURE 36 pt.

Note: They will usually appear in alphabetical order among all other available fonts.

Note: The font point size must be selected as indicated in the font name. The font displayed on the screen will not resemble the printed font.

Comparison of printer drivers configured as MICR and non-MICR

CONFIGURED FOR MICR	CONFIGURED FOR NON-MICR
 <p>Source Technologies MICR 0 Ready</p>	 <p>Source Technologies non-MICR 0 Ready</p>
<p>MICR_on.sep separator page used Unlocks Secure Resources (fonts) Copy Count = 1 Jam Recovery = Off MICR Toner Only DEFAULT MICRJOB=ON</p>	<p>MICR_off.sep separator page used Locks Secure Resources (fonts) DEFAULT MICRJOB=OFF</p>
<p>Secure Fonts enabled by 97xxFont.pcm ICR Secure 12 pt. MICR CMC7 8 pt. MICR E13B 8 pt. MicroPrint 1 pt. SECURE 36 pt.</p>	<p>No Secure Fonts</p>
<p>Universal Driver Options to set on the driver Install Options tab Base printer Automatic duplex Multipurpose feeder Flash memory card (optional, if installed) Tray 2 (optional)</p>	